



**Level 3/D329/132-138 Killeaton Street St Ives NSW**

**2  2  1 **

Entry Via Building D - Foyer Access from Killeaton Street

Linfield Property Agents are proud to present this two bedroom apartment in "Alcove" complex with resort style facilities, with easy access to bus services, elite schools, local shops and cafes.

**Features:**

- 2 Bed | 2 Bath | 1 Car
- Open living and dining area leading to balcony with leafy outlook
- Modern kitchen with gas cook top, good quality appliances, stone kitchen island, dishwasher
- Two generous size bedrooms with large mirrored built-in wardrobes

[For full version visit the website](https://www.linfieldgroup.com.au)

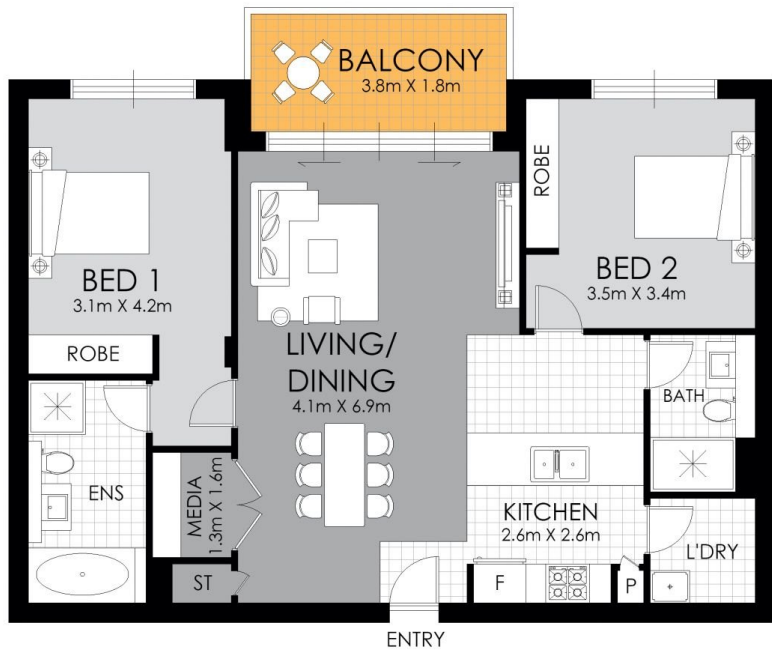
**Type** : Apartment  
**Price** : Revised Buyers Guide \$800,000  
**Building Size** : 104 sqm  
**View** : <https://www.linfieldgroup.com.au/sale/nsw/north-shore-upper/st-ives/residential/apartment/8137962>



**Shan Lin**  
02 8036 6999



**Rita (ruolong) Huang**  
02 8036 6999



APPROXIMATE AREAS	
Internal	81 sqm
Balcony	7 sqm
Total	88 sqm
APPROXIMATE OUTGOING	
Strata	\$1727.80 pq
Council	\$363.00 pq
Water	\$172.10 pq

## FLOOR PLAN



**St Ives**  
D329/132-138 Killeaton St.

**WARNING: DISCLAIMER** This information is not to be relied upon. It is strictly used for marketing and illustration purposes only. All measurements are approximate. Not to scale. No liability accepted. You must rely on your own inquiries and seek advice from your solicitor. Floor plan by [cnkplan@cnkplan.com.au](mailto:cnkplan@cnkplan.com.au) / [www.cnkplan.com.au](http://www.cnkplan.com.au)